

ASSETHUB TENDER SALE

UNDER INSTRUCTION OF A BANK

**14 DRILLING RIGS
PHOTOS**

BAUER BG39 (2017)



BAUER BG39 (2017)



BAUER BG39 (2017)

 BAUER Maschinen GmbH BAUER-Str.1, 86529 Schrobenhausen, Deutschland	
Spezialtieflagerät, Gerättyp <i>Special foundation equipment, Type</i>	BG 39
Baujahr <i>Year of manufacture</i>	2017
Fabrik Nr. <i>Serial No.</i>	3458
Motorleistung <i>Engine power</i>	433 kW
Inventurnummer <i>Inventory number</i>	
Betriebsdruck <i>Working pressure</i>	350 bar
Hauptwinde Hakenregellast / Ausnahmelaast <i>Main winch normal / exeption</i>	360 kN
Hilfswinde Hakenregellast / Ausnahmelaast <i>Auxiliary winch normal / exeption</i>	100 kN
Trägergerät <i>Base carrier</i>	BS 95.6.2138
Gesamtgewicht <i>Total weight</i>	124000 kg
Arbeitsspannung <i>Working voltage</i>	24 V
Rückzugskraft <i>Pulling force</i>	400 kN
Vorschubkraft <i>Pushing force</i>	400 kN



BAUER BG39 (2017)



MAST

KDK 390 S-3



5M EXT MAST



IMT AF-280



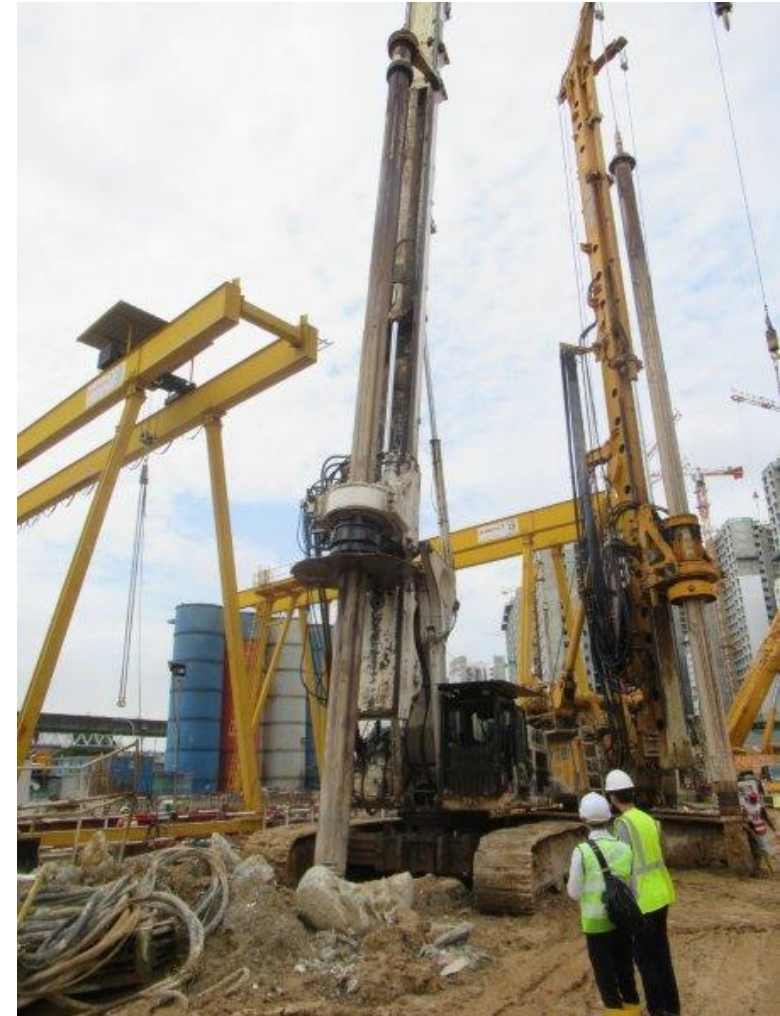
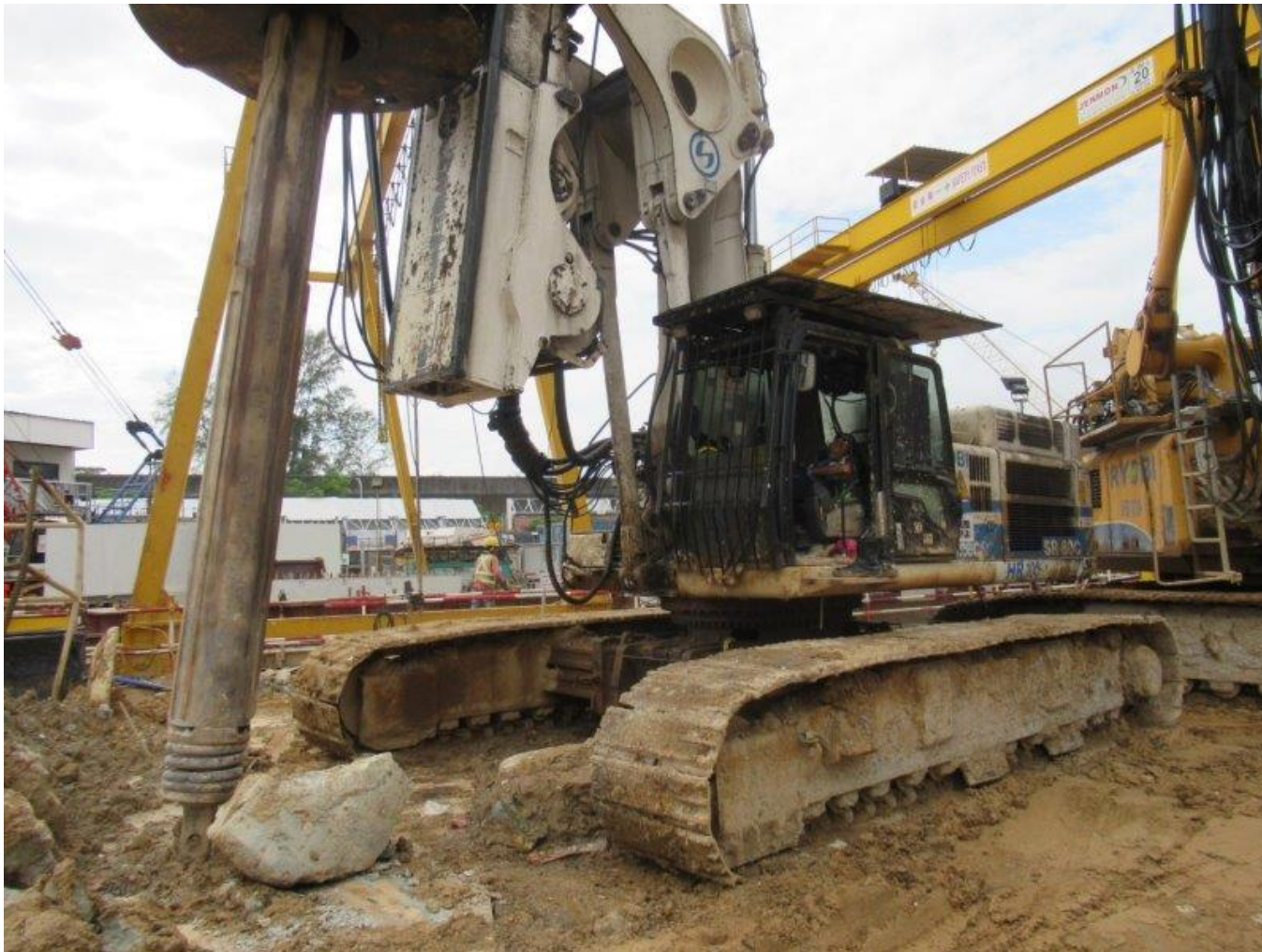
IMT AF-300 (2010)



SOILMEC SR-60 (2010)



SOILMEC SR-80C



SHANTUI SER22A (2011/2) – 3 UNITS



IMT AF200 (2008) – 4 UNITS



IMT AF200 (2008)



IMT AF200 (S/N. 200DNXQ1500)



SOILMEC SR-60 (2010)



IMT AF300 (2010)



SOILMEC R625 (2007)



SOILMEC SM14 (2010)

SHANTUI SER22A (2011/2) 3 UNITS



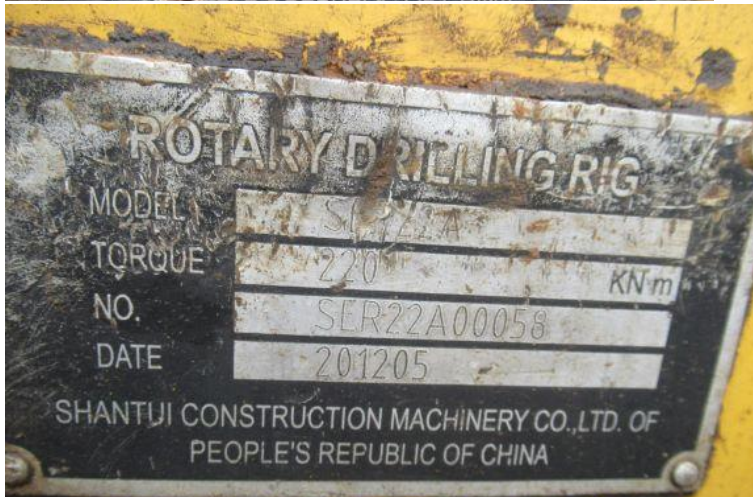
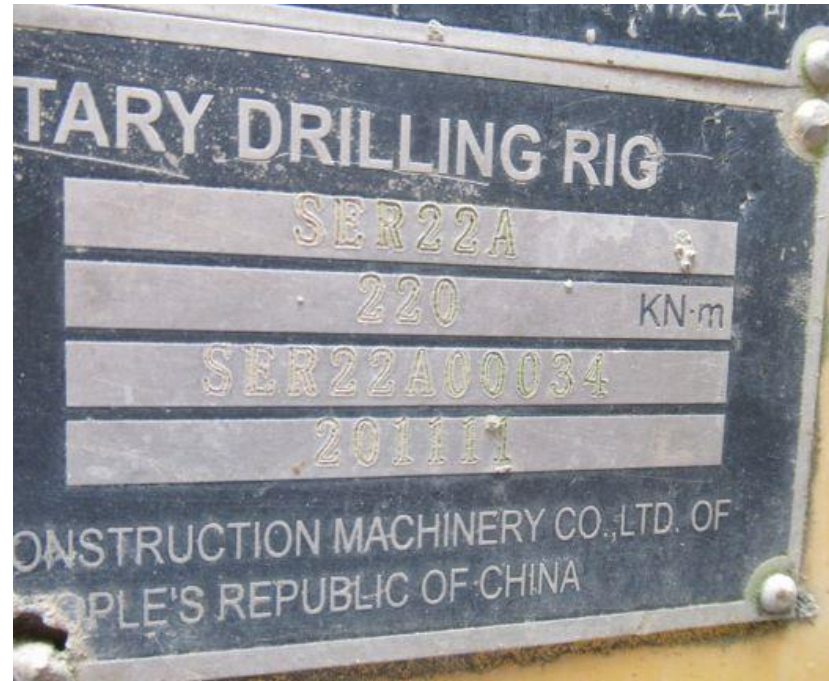
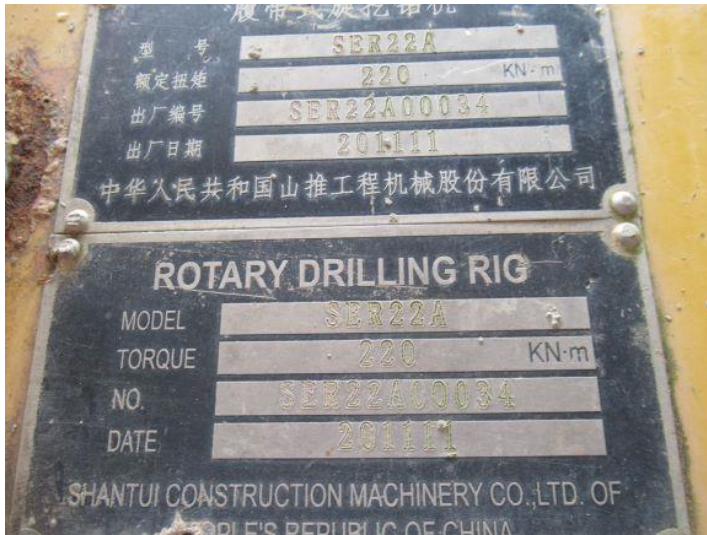
MACHINE PLATES



MACHINE PLATES



MACHINE PLATES



100dB

IDENTIFICATION NUMBERS FOR COMMUNICATIONS WITH CATERPILLAR®

	SERIAL NUMBER	ARRANGEMENT NUMBER-CHG NO.
POWER MODULE	D3D00-193	2899921
PARTS BK. REF.		
ENGINE	7HY26889	2585338
TRANSMISSION		
TORQUE CONV.		
GENERATOR		
AXLE		
LOVER		

4C-1456-11

CONTACT US

INTERESTED PARTIES MAY DOWNLOAD THE TENDER FORM ON WWW.ASSETHUB.SG

AssetHub Pte Ltd

80 Changi Road Centropod @Changi #02-58 Singapore 419715

O: 69095357 | F: 69095367 | E: bc.lee@assethub.sg