

ASSETHUB TENDER SALE

UNDER INSTRUCTION OF PENTA-OCEAN CONSTRUCTION LTD AND LIQUIDATOR OF CIVIL TECH PTE LTD

**Ex POC-CT JV's Assets:
Sumitomo Excavator, Trailer Concrete
Pumps, Digital Levels**

TENDER SALE



Under The Instruction of Penta-Ocean Construction Co.,Ltd & The Liquidator of Civil Tech Pte Ltd (In Liquidation)

ex POC-CT JV's Assets: Sumitomo Excavator, Trailer Concrete Pumps, and Digital Levels

Closing of Tender: 17 October 2019, 5:00 pm

Featured Items:

A Sumitomo PC200-8 Excavator, 3 units Trailer-mounted Concrete Pumps (Reed 3120C, etc), and 3 units Leica DNA03 and Sokkia SDL30 Digital Levels

Viewing:

All parties attending the site preview must submit particulars to Auctioneer for security clearance by 10 October 2019

For Tender document, viewing, and more information, please contact:

Auctioneers:

80 Changi Road #02-58, Centropod @ Changi, Singapore 419715

Tel: 69095357 Fax: 69095367

Email: bc.lee@assethub.sg

www.AssetHub.sg

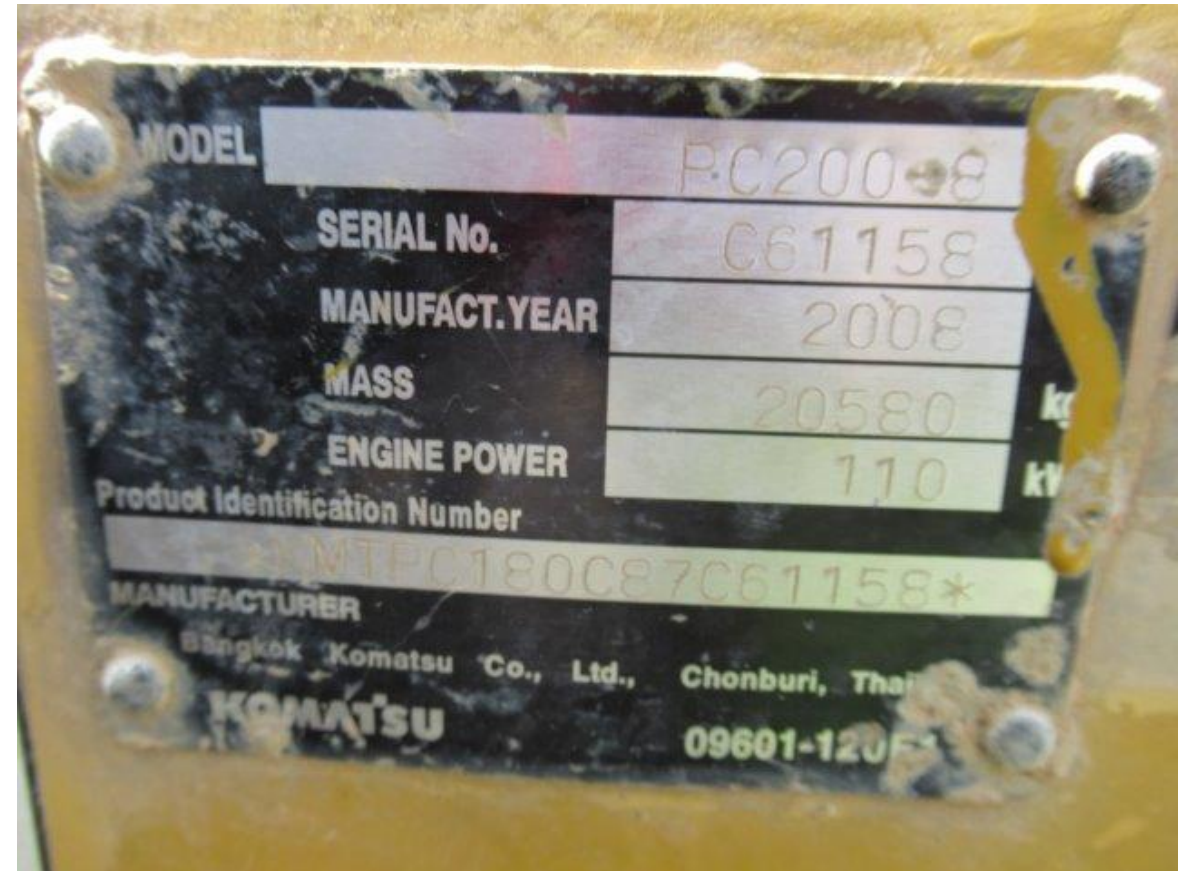
LOT 1 – KOMATSU PC200-8 EXCAVATOR



LOT 1 – KOMATSU PC200-8 EXCAVATOR



LOT 1 – KOMATSU PC200-8 EXCAVATOR



LOT 2 – REED 3120 CONCRETE PUMP



LOT 2 – REED 3120 CONCRETE PUMP



LOT 2 – REED 3120 CONCRETE PUMP



LOT 3 – REED 3120C CONCRETE PUMP



LOT 3 – REED 3 I 20C CONCRETE PUMP



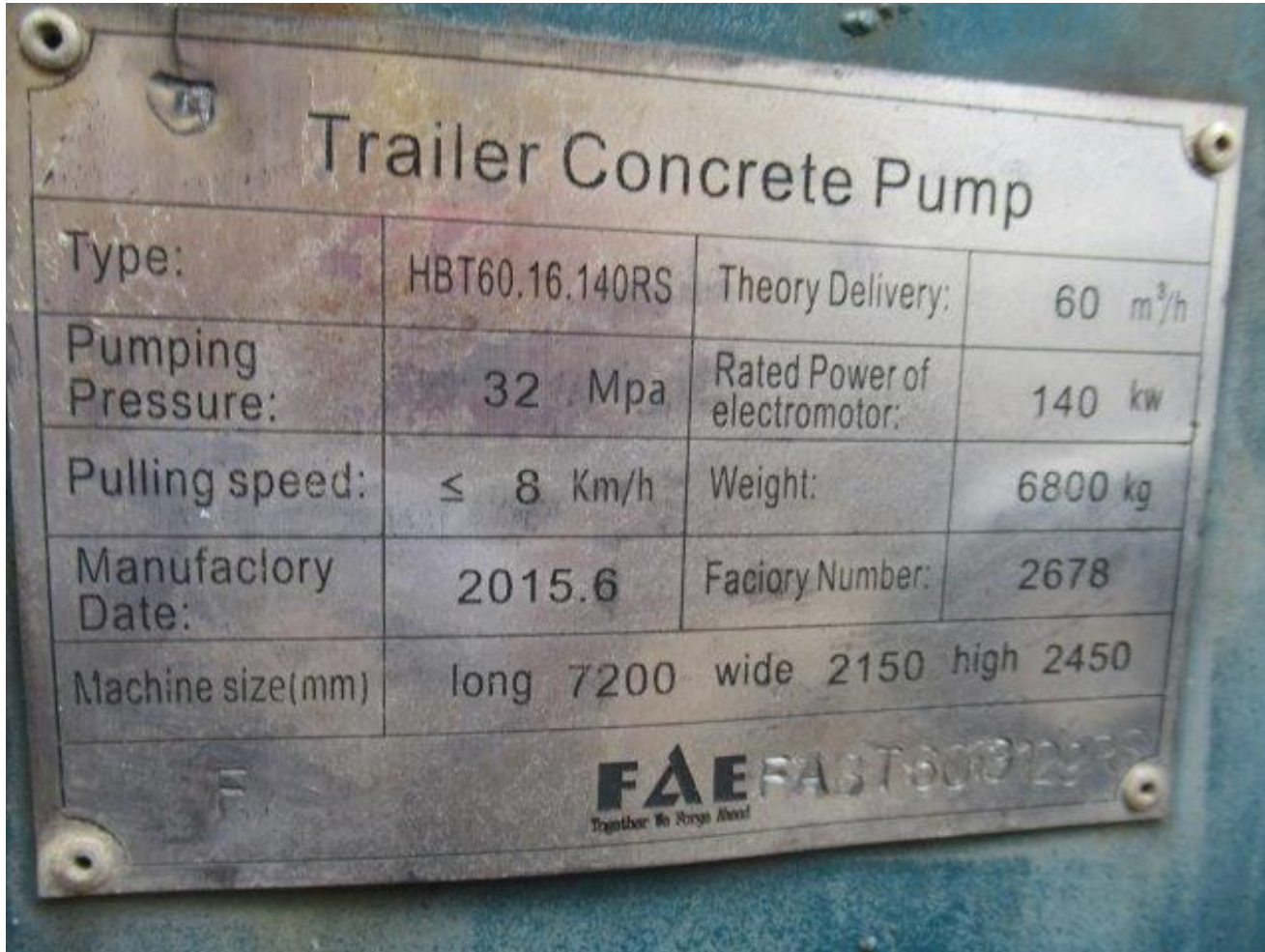
LOT 4 – FAE HBT60 CONCRETE PUMP



LOT 4 – FAE HBT60 CONCRETE PUMP



LOT 4 – FAE HBT60 CONCRETE PUMP



LOT 5 – LEICA DNA03 PRECISION DIGITAL LEVEL



LOT 5 – LEICA DNA03 PRECISION DIGITAL LEVEL



LOT 6 – SOKKIA SDL30



LOT 7 – SOKKIA SDL30



LOT 7 – SOKKIA SDL30



LOT 7 – SOKKIA SDL30



CONTACT US

INTERESTED PARTIES MAY DOWNLOAD THE TENDER FORM ON WWW.ASSETHUB.SG

AssetHub Pte Ltd

80 Changi Road Centropod @Changi #02-58 Singapore 419715

O: 69095357 | F: 69095367 | E: bc.lee@assethub.sg